

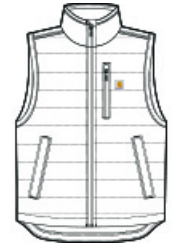


Carhartt® Women's Gilliam Vest CT104315

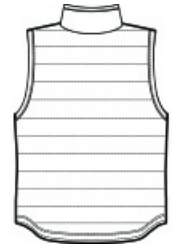


Keep working through cold, wet weather in this women's version of our popular Gilliam Vest.

- 1.75-ounce, 100% nylon Cordura® shell
- Rain Defender® durable water repellent
- Wind Fighter® technology tames wind
- Nylon lining quilted to 100-gram polyester insulation
- Reverse coil center front zipper
- Zip-through collar
- Left chest map pocket with reverse coil zipper
- Two hand pockets with hidden snap closures
- Two interior pockets: one zippered, one hook and loop closure
- Drawcord adjustable drop tail hem
- Carhartt-strong, triple-stitched main seams
- Carhartt label sewn on chest pocket
- Relaxed fit



front

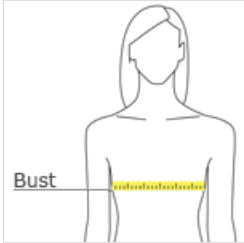


back

CARE INSTRUCTIONS

Machine Wash Cold. Do Not Bleach. Tumble Dry Low. Cool Iron. Do Not Dry Clean. Exclusive Trimming.

HOW TO MEASURE



BUST

Measure under the arm and around the fullest part of the bust with arms down, keeping tape horizontal.

SIZE CHART

	XS	S	M	L	XL	2XL
Size	2	4/6	8/10	12/14	16/18	20
Bust	33	34-35	36-37	38 1/2-40	41 1/2-43 1/2	45 1/2

COLOR INFORMATION



Black
PMS BLACK C



Shadow Grey
PMS 7540C